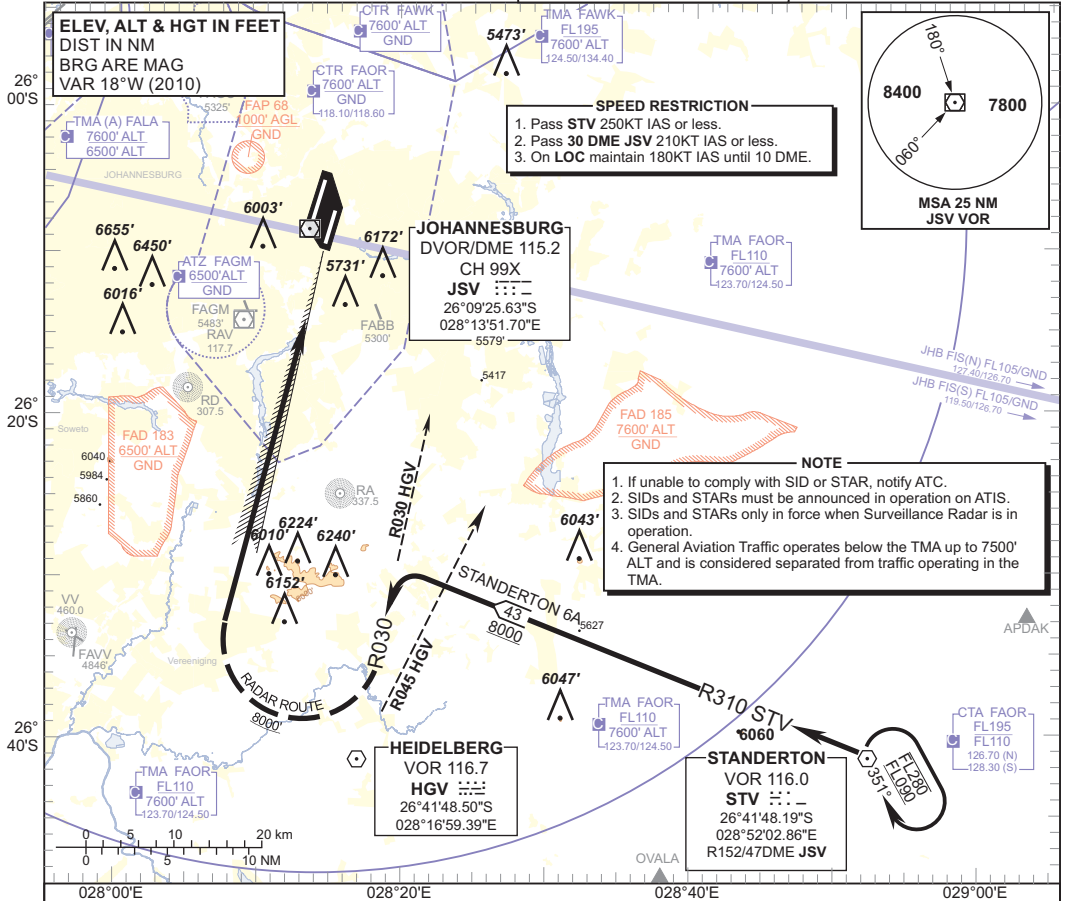


**STANDARD ARRIVAL  
CHART -  
INSTRUMENT  
(STAR)**

TRANSITION ALTITUDE  
**8000'**  
TRANSITION LEVEL  
**ATC**

RADAR APP S 124.50 TWR E 118.60  
E 124.50 W 118.10  
W 123.70 ATIS 126.20  
DIR 121.40 115.20  
ACC N 126.70 SMC 121.90

**JOHANNESBURG**  
(O.R. TAMBO INTERNATIONAL)  
**RWY 03R**  
**STANDERTON 6A**



**STANDERTON 6A, RWY 03R** Leave STV on R310 STV (OUBD). Crossing R045 HGV turn left to intercept R030 HGV (INBD) for radar vectoring onto the ILS LOC RWY 03R.

**COMMUNICATION FAILURE PROCEDURE (Squawk 7600)**

- Before STV:** Proceed to STANDERTON and enter the STV hold. Hold at last assigned level for minimum 5 MIN, then descend to FL130 in the hold or maintain last assigned level if below FL130. Leave STV on the "After STV" Communication Failure Procedure.
- After STV:** Leave STV on R310 STV (OUBD) and descend to FL130. Crossing R197 JSV turn right on track 350° and descend to 8000' ALT to intercept the ILS LOC RWY 03R. Complete a straight-in ILS APCH and land RWY 03R.
- Note:** Aircraft entering the TMA at FL110 and below are to enter the STV hold at last assigned level and continue on the routing for the STANDERTON 6A STAR.
- Caution:** Holding patterns below FL110 will be conducted partially outside controlled airspace.

In the event of a missed approach with the intention of diverting to an alternate aerodrome, proceed as follows:

- To the North and North-West: Follow the routing for the VASUR 3A SID.
- To the East and North-East: Follow the routing for the EGMEN 2A SID (Jet ACFT) or EXOBI 1A SID (Turbo-prop ACFT).
- To the South-East: Follow the routing for the APDAK 3A SID.
- To the West and South-West: Follow the routing for the RAGUL 3A SID.

CHANGE: SPEED RESTRICTION BLOCK